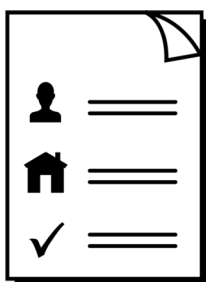


# Our strategic plan

2024 to 2028



**Easy Read**



## About this book



This book is from Queen Victoria Women's Centre.



This book is written in a way that is easy to understand.



You can read more information about our work on our

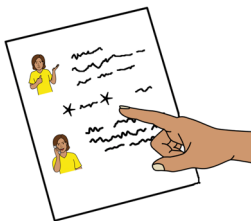
[About Us web page](#)

<https://www.qvwc.org.au/our-story>



[Resources web page](#)

<https://www.qvwc.org.au/resources>



We add a star before and after **\*hard words\***.

Then we explain what the words mean.



You can ask someone to help you read and understand this book.



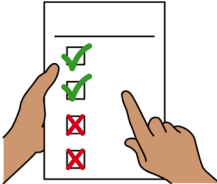
Contact information is at the end of this book.

## About our \*strategic plan\*



Our strategic plan tells you

- what we want to happen in our organisation
- how we will make things happen.

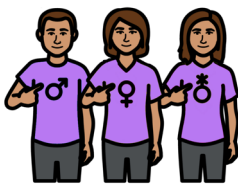


We want all women and **\*gender diverse\*** people to

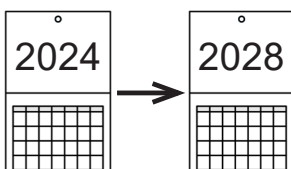
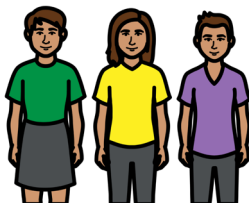
- feel welcome and valued
- be able to decide what they want now and in the future.



Gender diverse means you identify with a gender or genders other than **man** or **woman**.



When we say **women** it includes transgender and gender diverse people.



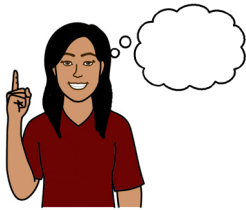
Our strategic plan is from 2024 to 2028.

## What our strategic plan says



There are 4 important parts of our strategic plan.

### 1. Tell all women in Victoria how we can support them

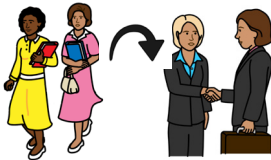


We want more women to know

- our **\*history\***



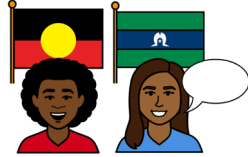
- how we can help and support them.



History means where we started and what we have done.

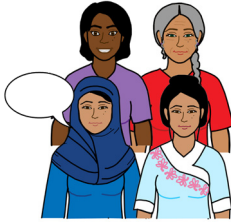


We share stories about our history at our centre.



We will talk to more

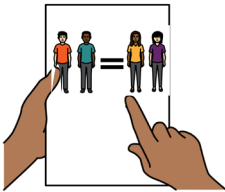
- First Nations women



- women from diverse cultures and backgrounds who speak languages other than English.



We will think about a new name for our organisation so people understand what we do.



We will write a plan about **\*diversity\*** and **\*inclusion\***.

Diversity means differences.

For example, different

- abilities
- cultures
- religions.

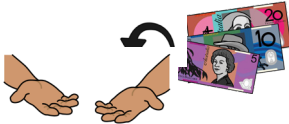


Inclusion means everyone can be part of something.

## 2. Earn enough money to look after the building and people who use it



We will manage money well.



We will find new ways to earn money.

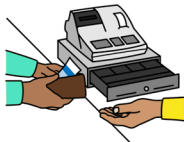


For example, we will

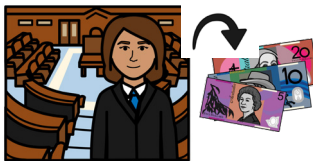
- apply for **\*government grants\***



- do **\*fundraising\***



- help our shop sell more products.



Government grants means money from the government.



Fundraising means activities to raise money for our programs.

### 3. Work with women's organisations to support our community



We will help connect women's organisations and share information to support our community.



We will help more women's organisations have work spaces in our building.



We will give more support to women for new ideas and projects.



For example, we will

- hold exhibitions and events
- share information on social media.



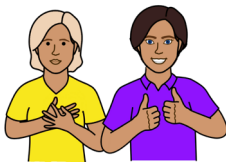
## 4. Make our centre a place where everyone feels welcome



We will tell more people about our centre.



We want more women and gender diverse people to visit and use our centre.



We will do more to improve the health and wellbeing of women and gender diverse people.



We will work with women and women's organisations in **\*regional\*** areas.

Regional means places far away from cities.



We will ask more women and women's organisations for **\*feedback\*** about our centre.



Feedback means you tell us what you think about something.





## More information

For more information contact  
Queen Victoria Women's Centre.

**Visit us** 210 Lonsdale Street  
Melbourne Victoria

You can visit us  
Monday to Friday from 9 am to 5 pm.



**Call** 03 8668 8100



**Email** [admin@qvwc.org.au](mailto:admin@qvwc.org.au)



**Website** [Queen Victoria Women's Centre](https://www.qvwc.org.au)  
<https://www.qvwc.org.au>



## Help to speak and listen

If you need help to speak or listen, the National Relay Service can help you make a call.

**Call** 1800 555 660

**Website** [NRS Helpdesk](#)

<https://www.accesshub.gov.au/about-the-nrs/nrs-helpdesk>

## Help in your language



If you need help with other languages, contact the Translating and Interpreting Service.

**Call** 131 450

**Website** [TIS National](#)

<https://www.tisnational.gov.au>





The Queen Victoria Women's Centre is located on the lands of the Wurundjeri and Boonwurrung people of the Kulin nation.

We acknowledge that sovereignty was never ceded and pay our respects to Elders past and present, and extend this respect to other Aboriginal and Torres Strait Islander Australians.

Easy Read Australia created this Easy Read document in April, 2024 using Picture Communication Symbols (PCS). PCS and Boardmaker are trademarks of Tobii Dynavox LLC. All rights reserved. Used with permission.

You must ask for permission to use the images in this document.

For more information, please visit [Easy Read Australia](https://www.easyreadaust.com.au)

<https://www.easyreadaust.com.au>